

SHOUTPLAYER 3 BASIC

ShoutPlayer 3 Basic's playback features are the same as those in MediaShout 3 Express. If you play a presentation that was created in Express, the presentation will perform accurately.

However, if the presentation was created in MediaShout 3 Standard, it may contain cues and effects that cannot be played from ShoutPlayer. Here's a list of the MediaShout 3 Standard features that won't work in ShoutPlayer 3 Basic:

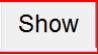
- DVD playback (any cue that plays a DVD clip will be skipped)
- external video sources (a cue that uses external video will be skipped)
- video transitions (transitions to and from video appear as cuts)
- text transitions over video (these appear as cuts)

HOW TO USE SHOUTPLAYER 3 BASIC


ShoutPlayer 3 Basic provides you with the ability to play MediaShout presentations (called Scripts) on a computer without the full MediaShout application installed. Here's how:


Open a presentation: Choose File > Open or click the Open Script  button.

Display the presentation screen:



On a single-output computer (with no projector or display device attached): Click the Show  button or press Ctrl+Shift+O. The presentation will appear on your screen. (Press Escape key to hide the presentation.)


On a dual-output computer: While opening, ShoutPlayer Basic will check if your computer has Extended Desktop enabled.


- If your desktop is extended, ShoutPlayer Basic will automatically display the presentation screen on the second monitor (Dual Screen mode).
- If your desktop is not extended, ShoutPlayer Basic will go into Single Screen  mode.

To manually enable Dual Screen mode: Click the Dual-Screen  button.

Note: If your Dual-Screen button is disabled, you need to enable Extended Desktop; after which you'll be able to manually enable Dual Screen mode. For help extending your desktop, see the Advanced Settings on the next page.

Play a presentation: Press Space bar, F10 or the Fire Next button  to fire each cue. Press Shift+Space, F9 or the Fire Previous button  to fire previous cue.

Fire black screen: Press F6 or click the Fire Black button  in toolbar.

Stop all media: Press F8 or click the Stop All button  in toolbar.

Re-fire current cue: Press F11, Enter, or click the Fire Selected button  in toolbar.

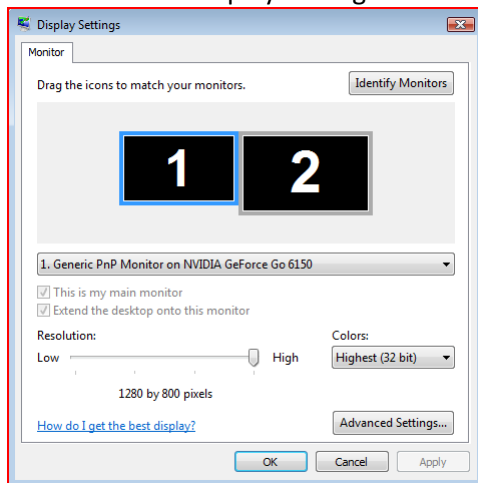
ADVANCED SETTINGS

Extend your Windows desktop onto a second monitor: select Screens > Windows Display Properties. You will either see two or more rectangles in the top half of the window (as shown in the Vista Display Settings, below) or a picture of a computer monitor (as shown in the XP Display Properties, below).

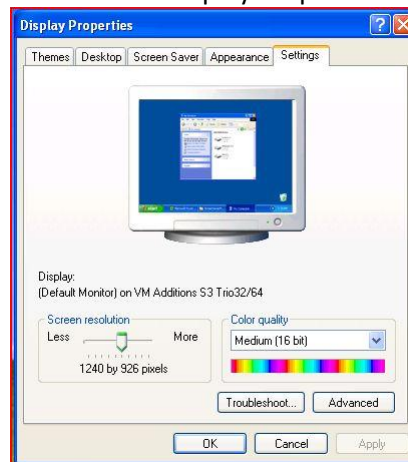
If you have two or more rectangles, highlight the rectangle representing the display output where you want to extend your desktop, typically rectangle 2. Then check Extend the desktop onto this monitor. Click OK to close the dialog window and apply your changes.

Note: If you only have a picture of a computer monitor, you cannot extend your desktop onto a second monitor.

Windows Vista Display Settings:



Windows XP Display Properties:



Change the playback mode:

Normal: select Playback > Mode > Normal.

This setting plays all cues, including timed cues, exactly as created.

Manual: select Playback > Mode > Manual.

This setting will override any timed cues and advance them only when Space bar is pressed or

Fire Next button  is clicked.

Slide Show: select Playback > Mode > Slide Show.

This setting allows a remote control using the most common remote control settings (Page Up and Page Down) to control the presentation. While in Slide Show mode, your mouse will be unable to click on ShoutPlayer. To exit Slide Show mode, press Escape (Esc) on your keyboard.

Switch which screen is showing the presentation:

If you open ShoutPlayer Basic and your windows desktop is extended onto the second monitor, ShoutPlayer will take control of your secondary monitor and the presentation will display on that monitor. If you need to switch which monitor is displaying your presentation, you can do so in ShoutPlayer.

If the current presentation is on your second monitor (Default): select Screens > Display on Primary Monitor

If the current presentation is on your primary monitor: select Screens > Display on Secondary Monitor